

Media Release

To: All Media

Date: Thursday, 01 August 2024

Embargo: For Immediate Release

PRASA reaches a significant milestone with introduction of the new modern trains on the Central Line

Johannesburg, 01 August 2024 – The Passenger Rail Agency of South Africa (PRASA) is pleased to announce the introduction of the new blue and white modern Electric Multiple Units (EMUs) on the Central Line, along with the extension of the service from Nyanga to Mandalay station. This is the first time we are deploying the “People’s Train” on this corridor, following the completion of essential electrical and perway infrastructure between Nyanga and Nolungile.

Communities along the Central Line, now join many who have enjoyed the service using the new high-tech modern trains in other corridors. These state-of-the-art trains are equipped with advanced features such as automated doors, CCTV cameras, and air-conditioning, ensuring a comfortable and secure trip for all passengers.

In addition to the new trains, the completion of signalling from Langa to Mutual marks a significant milestone in our efforts to enhance the safety and reliability of our services. Work to re-signal the rest of the Central corridor continues. This modern signaling system will not only improve the frequency and punctuality of our trains but will also reduce delays and congestion.

The rollout of the new trains and the advanced signalling system shows our commitment to revitalising and modernising commuter rail services. This important development in the region ensures we offer a safe, efficient, and dignified service to the 40% of Cape Town's commuters who rely on this key route. Extending the service on the Central Line to Mandalay station is expected to bring positive socio-economic benefits to the communities of Langa, Nyanga, Khayelitsha, Mitchells Plain, and other areas along the line.

Media Contact Person
Name: Andiswa Makanda
Contact Details:
Email: andiswa.makanda@prasa.com

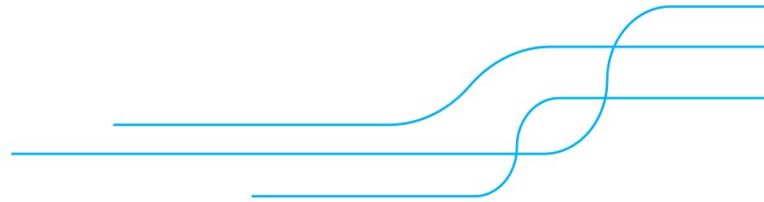
Umjantshi House
30 Wolmarans Str.
Braamfontein
2001

Private Bag X101
Braamfontein 2107
T+ 27 11 013 1667



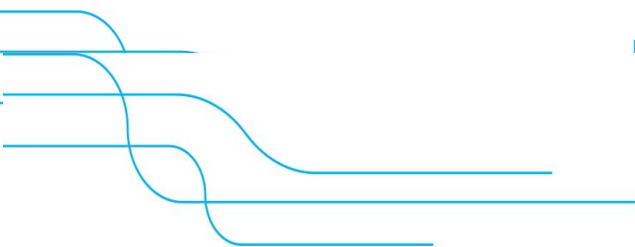
prasa

PASSENGER RAIL AGENCY
OF SOUTH AFRICA



This notable development builds on PRASA's recent achievements, including the reopening of 31 out of 40 commuter rail corridors and the refurbishment of 263 out of 463 stations.

//Ends



Media Contact Person
Name: Andiswa Makanda
Contact Details:
mail: andiswa.makanda@prasa.com

Umjantshi House
30 Wolmarans Str.
Braamfontein
2001

Private Bag X101
Braamfontein 2107
T+ 27 11 013 1667